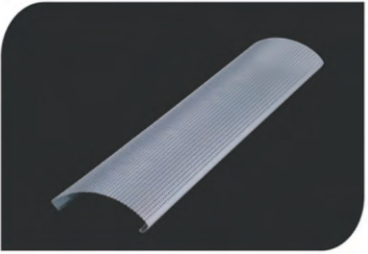
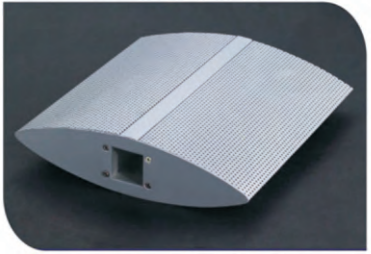
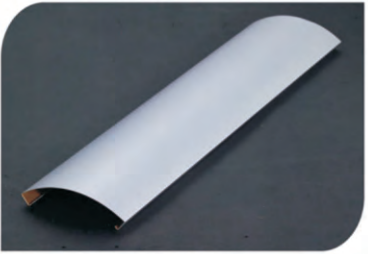
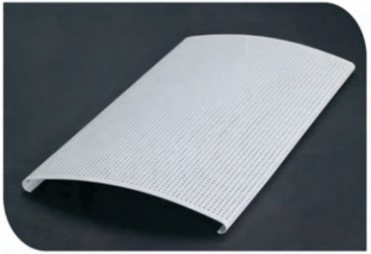
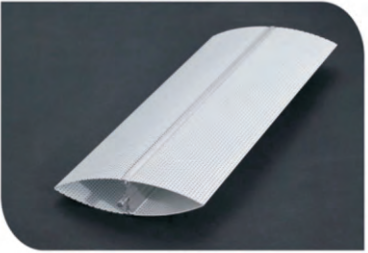
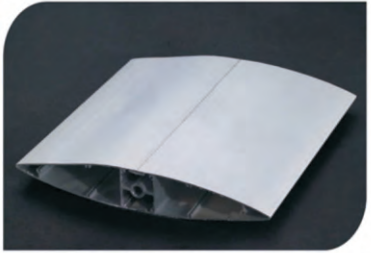
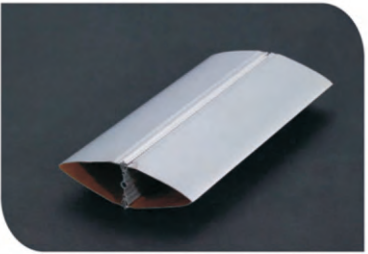
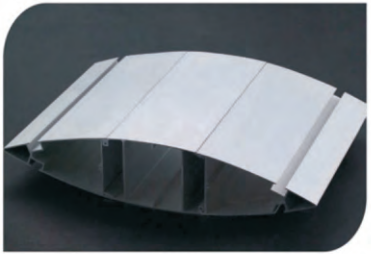


**OUSILONG®**

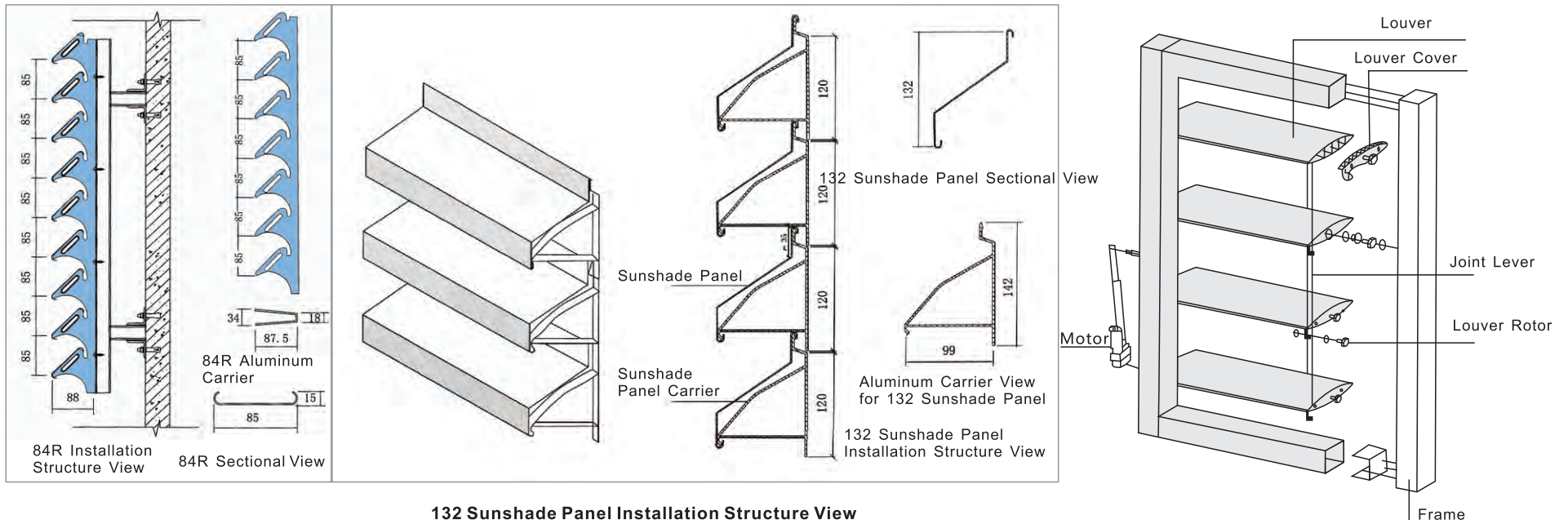
Aluminum  
Wall Panel

009/



# Sunshade Panel System

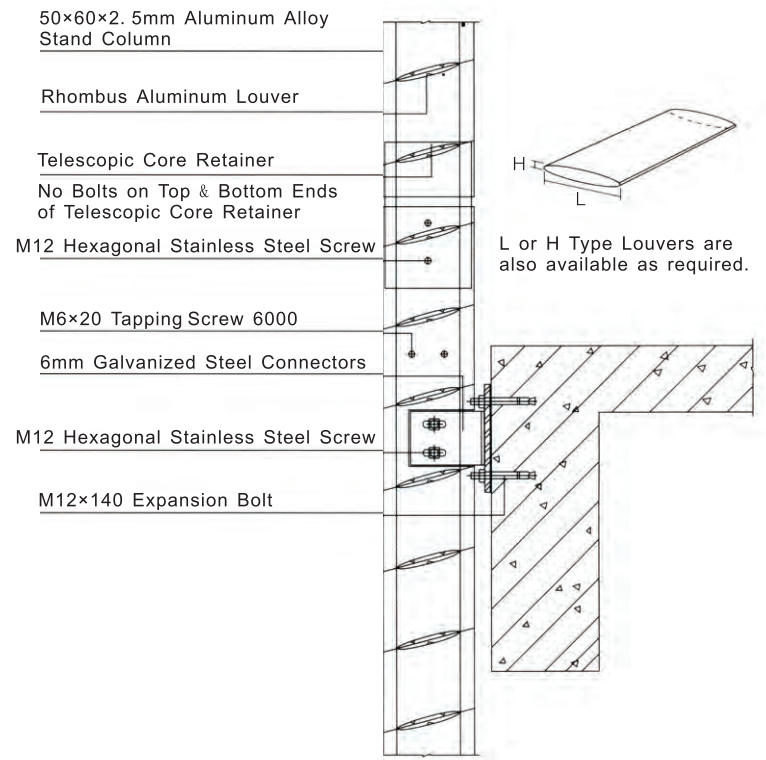
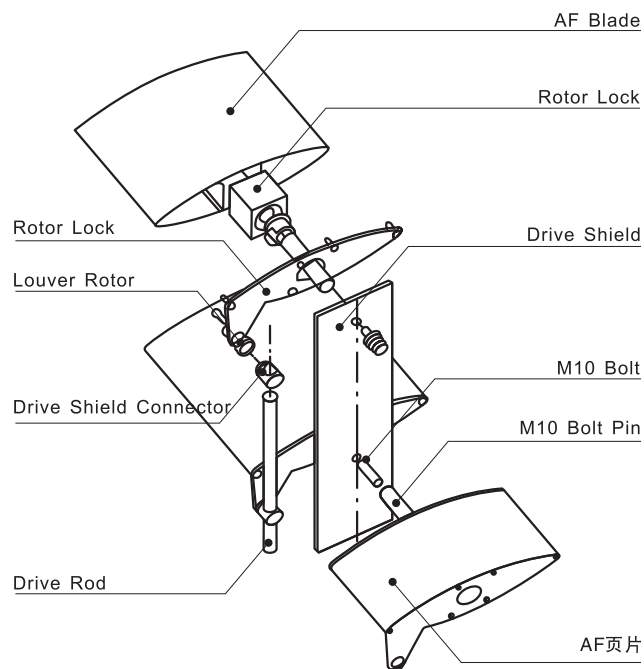
Sunshade panel consists of 0.6mm aluminum sheet and 0.8 or 1.0mm aluminum alloy carrier. It not only blocks sunlight to save energy, but also brings the monotonous exterior wall changeful beauty & fashion. It is widely used on facades of municipal buildings, exhibition halls, airports, stadiums and etc.



132 Sunshade Panel Installation Structure View



## Installation View



Rhombus Louver Node Diagram